



# Better Security with BenQ

Display solutions designed with security in mind



# Better Security with BenQ

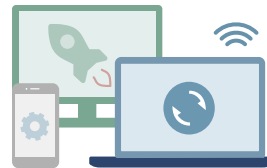
BenQ knows that bringing in new devices to your organisation always comes with a few risks. Without sufficient security, these products may leave your networks exposed, increasing chances of data leaks, privacy violations, and operational setbacks.

Trust BenQ to deliver solutions that perfectly fit your current security strategy. When it comes to displays, we not only offer the best in terms of image clarity, colour accuracy, sound quality, and interactivity, we also provide top-end security to safeguard your organisation.

Our end-to-end solutions—from individual devices to cloud infrastructure—offer multiple levels of security that help you tick every item on your security checklist.



Device Security



Network Security



Cloud Security

**01** We adhere to international standards and uphold your right to data privacy

---

**02** We help you protect your organisation against security threats

---

**03** We offer secure access to your boards, user accounts, and files

# 01

## We adhere to international standards and uphold your right to data privacy

BenQ Boards and its related cloud services have gone through rigorous screening and have passed the strict data privacy criteria imposed by the European Union's General Data Protection Regulation (GDPR and GDPR-K), the California Consumer Privacy Act (CCPA), the UK's Product Security and Telecommunications Infrastructure (PSTI) regime, the Children's Online Privacy Protection Act (COPPA), and ISO/IEC 27001 security standards.



GDPR



GDPR-K



CCPA



PSTI



COPPA



# We adhere to international standards and uphold your right to data privacy

## Ethical data collection and usage

Compliant with international data regulations such as GDPR, CCPA, and the UK's PSTI regime, BenQ guarantees that we do not collect or store personal identifiable information (PII) unless permitted by our customers.

BenQ also ensures that any customer data, such as their organisation's user directories, will only be used for the purposes explicitly agreed upon by both parties; these may include enabling and improving specific cloud services and device functionalities.

BenQ will not sell or unlawfully share the data of our customers.

## Vetted cloud infrastructure

We host the BenQ service portal and our databases on Amazon web servers (located in Frankfurt, Germany), which are built to meet the highest standards for data security, privacy, and reliability. BenQ cloud services are regularly tested by third-party auditors in line with AWS Compliance programs.



# We adhere to international standards and uphold your right to data privacy



## Secure communications

BenQ websites use internet security protocols such as SSL and HTTPS to secure your connection, encrypt any transmitted data, and prevent attackers from intercepting data sent between BenQ online portals and your devices.

## Convenient authorisation

BenQ web services make use of OAuth 2.0 and JSON web tokens, industry standards that are utilised for efficient authorisation across multiple devices without requiring our users to share their private credentials with BenQ.



## Multi-factor authentication

BenQ allows users to enable multi-factor authentication, which would require them to input a security code sent to their mobile device when logging in. This additional step helps verify their identity and prevents unauthorised access in case their login credentials are compromised.

# We adhere to international standards and uphold your right to data privacy

## Passwords stay private

BenQ Boards never save passwords locally when users log in to their BenQ accounts. This minimises the risk of unauthorised access to the boards and user data.

BenQ Boards also provide alternative login methods that help prevent users from entering their credentials on screen and ensure that their passwords are not publicly exposed.



### QR code login

Users can scan a QR code displayed on their BenQ Board and then log in from their mobile device.



### NFC login

Some BenQ Board models come with built-in NFC sensors. System administrators can issue NFC cards to each user for controlled access and easy login.



### Single sign-on

BenQ Boards support secure single sign-on services such as Google, Microsoft Entra, and ClassLink that use encrypted tokens to protect user credentials.

# 02

## **We help you protect your organisation against security threats**

BenQ helps schools and companies safeguard their systems and data against threats such as malware and hacking by providing holistic security options that cover different levels of their data infrastructure.

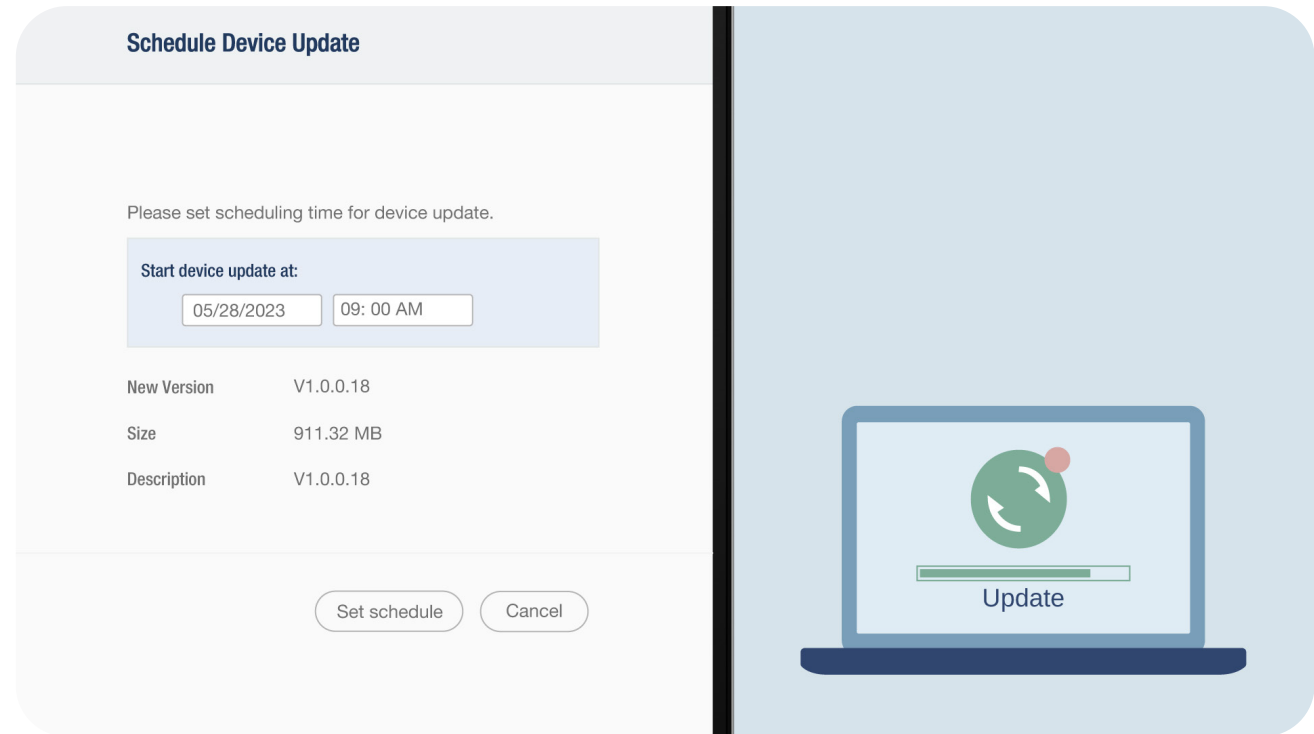


# We help you protect your organisation against security threats

## Protection against exploits

BenQ regularly provides the latest security patches and firmware updates for all rolling models of our BenQ Boards. Administrators can take full advantage of their BenQ Board's over-the-air (OTA) update feature and remotely push these patches to all of their boards via the internet.

This not only ensures that their displays will have the necessary and timely protections against exploits and related attacks on their network, it also helps keep their board's operating system and BenQ software functioning at optimal performance.



# We help you protect your organisation against security threats

## Flexible network security options

BenQ Boards come with flexible network settings, which allow IT administrators to configure their displays to better complement their existing security strategy.

### Enterprise-grade authentication

Set up WPA2-Enterprise for user authentication and more secure communication.

### Encrypted data transmission

Apply certificates to validate other devices and encrypt data.

### Proxy-level protection

Configure proxy settings to restrict access to harmful sites.

## Antimalware measures

Users of the 04 series BenQ Boards can take advantage of Google Play Protect and Safe Browsing.

**Google Play Protect** ensures that apps are carefully vetted before users can download and install them on the board. It also scans and removes any installed app exhibiting suspicious activity.

Meanwhile, **Google Safe Browsing** safeguards users while they are browsing online as it warns them if they visit potentially harmful sites that involve phishing and other web-based threats.



Google Play  
Protect



Google  
Safe Browsing

# We help you protect your organisation against security threats

## Open and transparent reporting

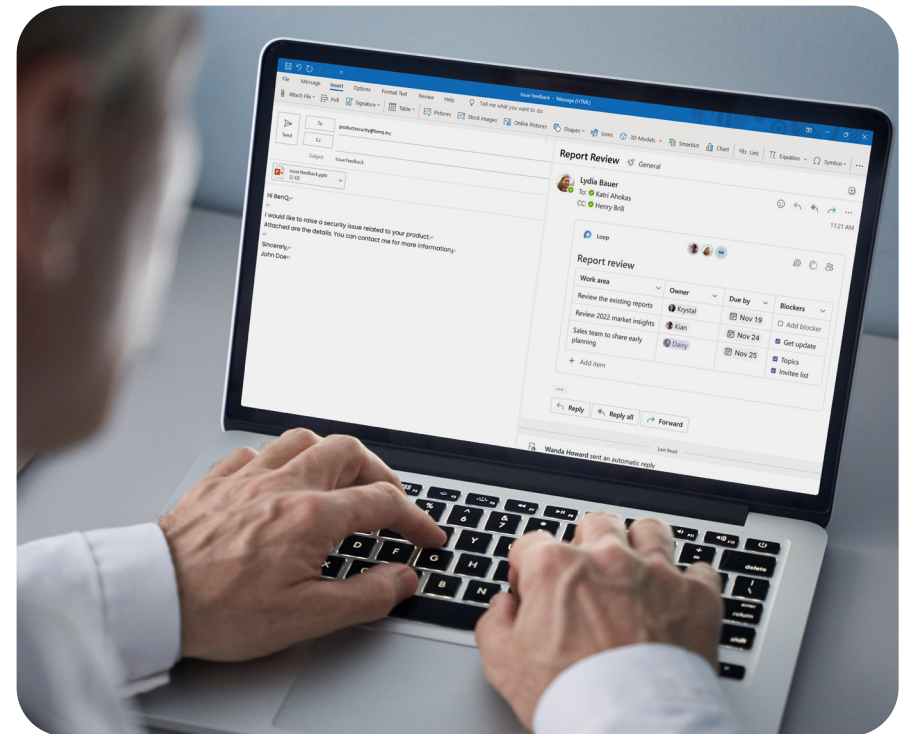
In case BenQ customers encounter potential security vulnerabilities while using any of our products and services, they can easily reach out to us through [productsecurity@benq.eu](mailto:productsecurity@benq.eu).

We have a standard case handling process that guarantees a prompt response within 72 hours. All information gathered throughout this process will remain secure and confidential, in line with the BenQ Privacy Policy.

We also regularly publish the latest information on software updates and security patches through our official customer-facing channels.

All these measures are fully compliant with the UK's PSTI regime.

For more information on how BenQ products protect user security, visit:  
<https://www.benq.eu/en-uk/policy/product-security.html>



## 03

### **We offer secure access to your boards, user accounts, and files**

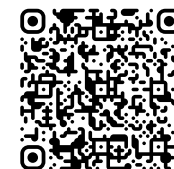
Through the BenQ Account Management System (AMS) and Identity and Access Management (IAM) system, we offer IT administrators a way to create and manage user accounts, allowing them to prevent any unauthorised access and possible tampering of BenQ Board settings, user files, and folders.

# We offer secure access to your boards, user accounts, and files

	Guest users	Restricted users	Authenticated users
Login	Not required	Required	Required
Modification of settings	Not allowed	Only basic settings	Regular user settings
Connected devices (via HDMI or USB-C)	✓	✓	✓
Public folder	✗	✓	✓
Personal folders	✗	✓	✓
Cloud storage	✗	✓	✓
EZWrite whiteboard	✓	✓	✓
InstaShare wireless screen sharing	✓	✓	✓
Web browser	✗	✓	✓

Get more in-depth information on secure access controls for the BenQ Board.

<https://www.benq.eu/en-uk/education/edtech-blog/access-granted-balancing-user-authority-security-benq-board.html>





# We offer secure access to your boards, user accounts, and files



## Secure user access

BenQ offers two ways that IT administrators can enforce stricter access controls for their BenQ Boards.

### Authentication mode

This mode offers a higher level of access control as it completely prevents guests from using the board and tampering with its settings. Enabling this mode on AMS ensures that only authenticated users will be able to use the board and its features.

### Restricted user role

Assigning this role ensures the highest level of access control as it restricts even authorised users and groups from making changes to any critical BenQ Board setting while still giving them access to all its essential features and functionalities.

## Idle session logout

Devices that are left unlocked and unattended are one of the most common causes of data leaks. Administrators can prevent this from happening on the BenQ Board by setting an idle session logout time on AMS. If ever a user forgets to log out of their board, AMS automatically logs out of the account.

## How can organisations make their smart devices more secure?

Below is a checklist you can use as a guide to help ensure that your smart devices are safe to use.

- Does your organisation have smart device usage guidelines?
- Are you able to assign and modify user privileges for your devices?
- Do you receive firmware updates and security patches for your devices?
- Can you install security software?
- Does your smart device allow you to configure its network settings to make it more secure?
- Does your smart device use secure cloud systems?
- Is your smart device and its cloud services compliant with data protection regulations?

**BenQ**

©2024 by BenQ Corporation. All rights reserved. BenQ, and the BenQ logo are trademarks or registered trademarks of BenQ Corporation. All other company and/or product names may be trademarks or registered trademarks of their owners. Information contained in this document is subject to change without notice.